

CLEVELAND

CNC BED MILL: CAV32

Specification



TABLE	10" x 50" (254mm x 1370mm)
X TRAVEL	31.5" (800mm)
Y TRAVEL	18" (460mm)
Z TRAVEL	20" (510mm)
SADDLE SIZE	20" (510mm)
QUILL TRAVEL	5" (127mm)
QUILL DIAMETER	3.37" (85.6mm)
SPINDLE NOSE TO TABLETOP	3.93" to 24.01" (100- 610mm)
SPINDLE CENTER TO COLUMN	18" (460mm)
TABLE LOAD CAPACITY	880 LBS (400KGS)
T-SLOT (3)	0.62" x 2.55"
SPINDLE TAPER	R8/NT30 (Optional: NT40)
PROGRAMABLE SPINDLE SPEED	70 to 4500 rpm with Hi/Lo gears
TRANSMISSION SPINDLE-MOTOR	Timing belt
HEAD SWIVEL(RIGHT/LEFT)	90/90 degrees
RAPID FEED RATE	X/Y/Z: 300 ipm AC
CUTTING FEED RATE	1 to 120 ipm
SPINDLE MOTOR/MAX POWER	3HP (Optional:5HP)
SERVO MOTORS ON XYZ	1 kW / 1 kW / 1 kW - AC
COOLANT PUMP	1/8 HP
LUBRICATION PUMP	Auto Lubrication
FLOOR PLAN DIMENSION	105.8" x 69.05" x 94.2"
NET WEIGHT	3740 LBS. (1700KGS)
POWER REQUIREMENT	8 KVA 3 phase 208V-230V (Max)
AIR REQUIREMENT	70-100 psi with power draw bar
OIL WAY RECOMMENDED	Mobil Vectra #2
OPTIONAL CHILLER OIL	Shell Tellus 32
COOLANT CAPACITY	7 Gallons

Featuring:

Centroid's Easy Conversational Programing OAK Pro License

Huge 15" Color Touch Screen

60GB Reliable Solid-State Memory, RS232 and 2USB ports for easy data X-fer.

3HP Spindle Motor. 70-4500rpm with Hi/Low Gear.

Quill Auto Feed

FC30 Meehanite casting with annealed & stress relieved for long term reliability.

Box Way design on the Y and Z axes. All axes have hand scraped Turcite covered ways.

100% Laser tested and calibrated positioning accuracy and repeatability.

High speed Delta AC motors and Drivers and Spindle inverter.



**Promoting Centroid
Controls since 1995**

CLEVELAND

CNC BED MILL: CAV32

Machine Standard

Auto lube system	Coolant system	Shop floor programming/Conversational
15" color LCD	60 GB solid state hard drive	Splash guard and Chip Pan
USB 2.0 port	RS-232 interface	Leveling bolts & plate
Tools & box	LED work light	Electronic Operation Manual Centroid
100 Step MPG	Quill Auto Feed	Parts manual machine

Machine Options

*Are Recommended items

*PDB-MAX	Power Draw Bar-Maxi-Torque
Table Guard with 2 Lexan doors	
*QS	Quill Scale installed
8928	Upgrade to Wireless MPG
CP-MIST	Mist Coolant System
NST40	Upgrade to Spindle taper NST40
SP5	Upgrade to 5HP Spindle Motor
SG3	Single phase for 3HP Spindle system
SG5	Single phase for 5HP Spindle system
RS8	Riser block 8"
RS10	Riser block 10"
CK-101	52pcs Clamping Kit



100 Step MPG

Tools Options All Tools below are Made in Taiwan

R8 KIT RECOMMEND	
CK-101	52pcs Clamping Kit
COL-R8-11	Collet R8 set -11 pcs
R8-APU-16	R8 Keyless Drill Chuck (1/8"~ 5/8")
WISE-6-TW	6" Angle Vise W/ Swivel Base
NT30 KIT RECOMMEND	
CK-101	52pcs Clamping Kit
NT30-TOOL6	NT30 Tool Holder set (6 pcs.) 3/8, 1/2, 5/8, 3/4, 1", and Keyless drill chuck (6 pieces)
NT30ER32-10	NT30 ER32 Collet Set (10pcs.) 1/8,1/4, 5/16, 3/8, 7/16, 1/2, 9/16, 5/8, + NT30 ER32 chuck*1 + Wrench*1
NT30ER40-17	NT30 ER40 Collet Set (17pcs.) 1/8, 3/16, 1/4, 5/16, 3/8, 7/16, 1/2, 9/16, 5/8, 11/16, 3/4, 13/16, 7/8, 15/16, 1"+ NT30 ER40 chuck*1 + Wrench*1
WISE-6-TW	6" Angle Vise W/ Swivel Base
NT40 KIT RECOMMEND	
CK-101	52pcs Clamping Kit
NT40-TOOL6	NT40 Tool Holder set (6pcs.) 3/8,1/2,5/8,3/4,1" and keyless drill chuck
NT40ER40-10	NT40 ER40 Collect (10pcs.) 1/8,1/4,3/8,1/2,5/8,3/4,7/8,1" + NT40 ER40 chuck*1 +Wrench
NT40ER40-17	NT40 ER40 Collect (17pcs.) 1/8,3/16,1/4,5/16,3/8,1/2,9/16,5/8,11/16,3/4,13/16,7/8,15/16,1" + NT40 ER40 chuck*1+Wrench
WISE-6-TW	6" Angle Vise W/ Swivel Base



**6" Angle Vise
(Made in Taiwan)**



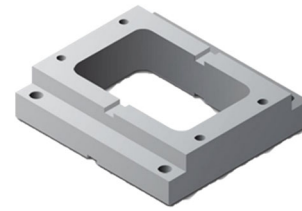
Power Draw Bar



Table Guard with 2 Lexan doors

CENTROID OPTIONAL ACCESSORIES

Optional Rotary Table



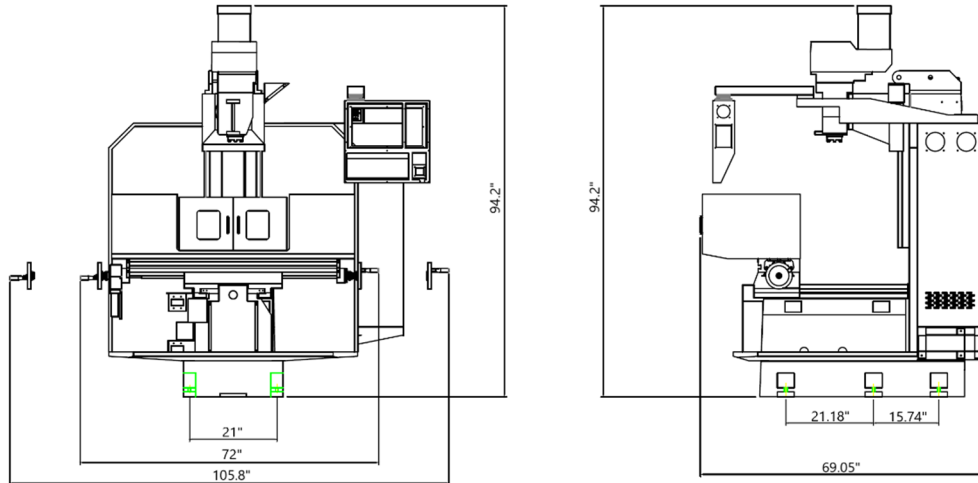
MNC-130R	CNC rotary table w/-Delta motor and driver 1KW. (Table size: 5.1")
DTS-130	Manual tailstock for MNC-130R
SK6 + AP1	3-Jaw manual scroll chuck w/-backplate
MNC-130RP	MNC130R 4th axis Rotary Table Package -MNC-130R+DTS-130+SK6+AP1
MNC-172R	CNC rotary table w/-Delta motor and driver 1KW. (Table size: 6.69")
DTS-171	Manual tailstock for MNC-171R
SK6 + AP1	3-Jaw manual scroll chuck w/-backplate
MNC-172RP	MNC170R 4th axis Rotary Table Package -MNC-172R+DTS-171+SK6+AP1
MNC-200R	CNC rotary table w/-Delta motor and driver 1KW. (Table size: 7.87")
DTS-200	Manual tailstock for MNC-200R
SK7 + AP1	3-Jaw manual scroll chuck w/-backplate
MNC-200RP	MNC200R 4th axis Rotary Table Package -MNC-200R+DTS-200+SK7+AP1

*A Riser Block is available for all rotary tables and tail stock packages.

CENTROID Software Options

10249	Printed Manual Centroid control	
10630	Unlimited part program size	Included
10730	Intercon off-line conversational program (for your desktop PC)	
10850	Coordinate system rotation (CSR)	Included
10625	Scaling and mirroring [G50 & G51]	Included
10740	Engraving software	
15010	Upgrade to CNC Unlimited License instead of PRO license	
DIGITIZING & PROBING		
10405	DP-4 probing package w/ CSR (10850)	
12486	DP-7 probing package w/ CSR (10850)	
10770	2D & 3D digitizing software (requires 10405)	
10220	TT-1; Tool touch off kit	
12468	TT-2; Tool touch off kit	
10772	Tool room package (10405 & 10220 & 10600 work coordinate)	

Floor Plan



** WE RESERVE THE RIGHT TO CHANGE DESIGN, COLOR, SPECIFICATIONS, OR PRICE WITHOUT NOTICE **

CLEVELAND MACHINERY SALES INC.

5000 BROOKPARK ROAD
CLEVELAND, OHIO 44134

WEBSITE: www.clevelandmachinery.com * EMAIL: sales@clevelandmachinery.com

PHONE: 216-741-8900

FAX: 216-741-8995