

CLEVELAND

CNC Knee Mill Model: CKV3NC 2+1



Specification

TABLE	10" x 54" (254mm x 1372mm)
X TRAVEL (SERVO)	32" (925mm)
Y TRAVEL (Servo)	14" (400mm)
Z TRAVEL	16" (405mm)
QUILL TRAVEL	4" (127mm)
QUILL DIAMETER	3 3/8" (86mm)
RAM TRAVEL	24" (610mm)
SPINDLE NOSE TO TABLETOP	3/4" to 16 3/4" (19- 425mm)
SPINDLE CENTER TO COLUMN	6 7/8" to 27 7/8" (175-710mm)
TABLE LOAD CAPACITY	700 LBS (320KGS)
T-SLOT (3)	0.62" x 2.55"
SPINDLE TAPER	R8/NT30
SPINDLE SPEED	70 to 5000 rpm with Hi/Lo gears
TRANSMISSION SPINDLE-MOTOR	Timing belt
HEAD SWIVEL(RIGHT/LEFT)	±90°
HEAD TILTING ANGLE (UP/DOWN)	±45°
SPINDLE MOTOR/MAX POWER	3HP
COOLANT PUMP	1/8 HP
LUBRICATION PUMP	Auto Lubrication
FLOOR PLAN	102" x 77" x 84"
NET WEIGHT	3,300LBS (1500KGS)
POWER REQUIREMENT	6 KVA 3 phase 208V-230V (Max)
TYPE OF OIL FOR OIL WAY	Mobil Vectra #2
AIR Requirement	With Opt. power draw bar 70-100 psi

Centroid OAK CNC Control PRO License Meehanite castings,

Box Way design on the Y and Z axes.

X Y Z Hardened & ground with Turcite-B coating guide way

Programable Variable Speed Head 70-5000rpm with Hi/Lo Gears.

Chip rubber cover (Front & rear)

Coolant System with Chip Pan and Splash Guard

Built in Halogen Work Light

Auto lubrication.

Precision APEC class 7 spindle bearing to ensure spindle run out within 0.0002inch.

Double nut precision Ball screws for high accuracy and long lasting.

CLEVELAND

CNC Knee Mill Model: CKV3NC 2+ 1

Machine Standard

3HP Spindle Motor	Programable Spindle Speed	Shop floor programming/Conversational
Auto Lubrication	Coolant System	Chip Tray and Table Guard
Way Cover	15" color LCD	USB 2.0 port
Draw Bar	Halogen work light	Operational manual
Electronic Operation Manual	Leveling bolts & plate	Tools & box
100 Step MPG		

Machine Options

*Recommended

*PDB-MAX	Power Draw Bar-Maxi-Torque installed
8928	Upgrade to Wireless MPG
CP-MIST	Mist Coolant System
SG3	Single phase for 3HP Spindle system \$550
RB6	6" Riser Block for Knee Mill
RB8	8" Riser Block for Knee Mill

Tools Options

R8 KIT RECOMMEND	
CK-101	52pcs Clamping Kit
COL-R8-11	Collet R8 set -11 pcs
R8-APU-16	R8 Keyless Drill Chuck (1/8"~ 5/8")
WISE-6-TW	6" Angle Vise W/ Swivel Base
NT30 KIT RECOMMEND	
CK-101	52pcs Clamping Kit
NT30-TOOL6	NT30 Tool Holder set (6 pcs.) 3/8, 1/2, 5/8, 3/4, 1", and Keyless drill chuck (6 pieces)
NT30ER32-10	NT30 ER32 Collet Set (10pcs.) 1/8, 1/4, 5/16, 3/8, 7/16, 1/2, 9/16, 5/8, + NT30 ER32 chuck*1 + Wrench*1
NT30ER40-17	NT30 ER40 Collet Set (17pcs.) 1/8, 3/16, 1/4, 5/16, 3/8, 7/16, 1/2, 9/16, 5/8, 11/16, 3/4, 13/16, 7/8, 15/16, 1"+ NT30 ER40 chuck*1 + Wrench*1
WISE-6-TW	6" Angle Vise W/ Swivel Base



6" Angle Vise
(Made in Taiwan)



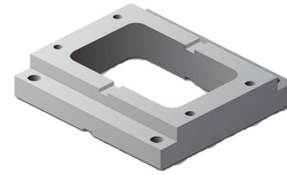
Power Draw Bar



100 Step MPG

CENTROID OPTIONAL ACCESSORIES

Optional Rotary Table



MNC-130R	CNC rotary table w/-Delta motor and driver 1KW. (Table size: 5.1")
DTS-130	Manual tailstock for MNC-130R
SK6 + AP1	3-Jaw manual scroll chuck w/-backplate
MNC-130RP	MNC130R 4th axis Rotary Table Package -MNC-130R+DTS-130+SK6+AP1
MNC-172R	CNC rotary table w/-Delta motor and driver 1KW. (Table size: 6.69")
DTS-171	Manual tailstock for MNC-171R
SK6 + AP1	3-Jaw manual scroll chuck w/-backplate
MNC-172RP	MNC170R 4th axis Rotary Table Package -MNC-172R+DTS-171+SK6+AP1
MNC-200R	CNC rotary table w/-Delta motor and driver 1KW. (Table size: 7.87")
DTS-200	Manual tailstock for MNC-200R
SK7 + AP1	3-Jaw manual scroll chuck w/-backplate
MNC-200RP	MNC200R 4th axis Rotary Table Package -MNC-200R+DTS-200+SK7+AP1

*A Riser Block is available for all rotary tables and tail stock packages.

CENTROID Software Options

10249	Printed Manual Centroid control	
10630	Unlimited part program size	Included
15100	Intercon off-line conversational program (for your desktop PC)	
10850	Coordinate system rotation (CSR)	Included
10625	Scaling and mirroring [G50 & G51]	Included
10740	Engraving software	
15010	Upgrade to CNC Unlimited License instead of PRO license	
DIGITIZING & PROBING		
10405	DP-4 probing package w/ CSR (10850)	
12486	DP-7 probing package w/ CSR (10850)	
10770	2D & 3D digitizing software (requires 10405)	
10220	TT-1; Tool touch off kit	
12468	TT-2; Tool touch off kit	
10772	Tool room package (10405 & 10220 & 10600 work coordinate)	

** WE RESERVE THE RIGHT TO CHANGE DESIGN, COLOR, SPECIFICATIONS, OR PRICE WITHOUT NOTICE **

CLEVELAND MACHINERY SALES INC.

5000 BROOKPARK ROAD
CLEVELAND, OHIO 44134

PHONE: 216-741-8900

FAX: 216-741-8995

WEBSITE: www.clevelandmachinery.com * EMAIL: sales@clevelandmachinery.com